



NAVAL FILTRATION SOLUTIONS SIMPLEX FILTER MANIFOLD MIL-DTL-24402/1





HYDRAULIC FILTRATION

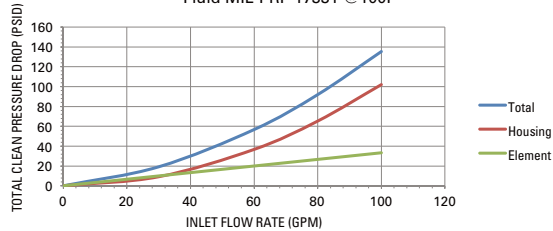
Rated Flow	50 gpm
Operating Pressure	3000 psig
Proof Pressure	4500 psig
Rated Fatigue Pressure	3000 psi
Material	Aluminum, Stainless Steel
Fluid	MIL-PRF-17331
Filter Element (1)	B-size per MIL-DTL-24402 or SAE J2321
Options	Indicator; Bypass Valve



PERFORMANCE AT-A-GLANCE

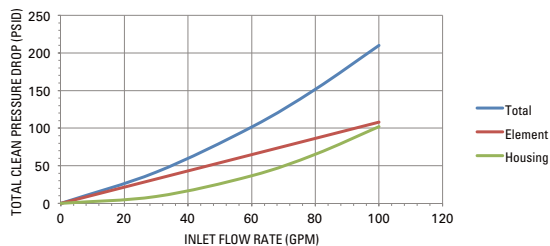
Simplex

MIL-F-24402 (B-size) Element: P/N 325807
40 micron
Fluid MIL-PRF-17331 @ 100F



Simplex

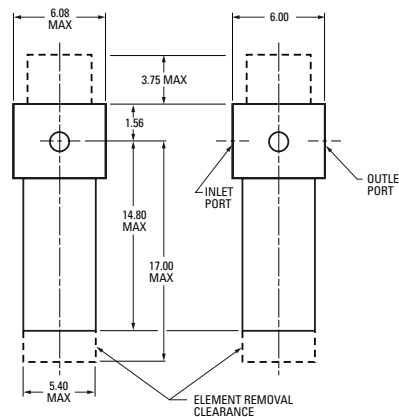
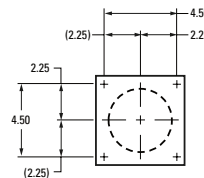
SAE J2321 Element: P/N 336663
7 micron
Fluid MIL-PRF-17331 @ 100F



SIMPLEX SPECIFICATIONS

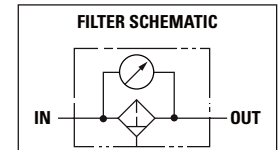
Envelope

MIL-DTL-24402/1A



Single-element (size B) filter housing outline dimensions

Hydraulic Schematic



VIEW OF ITEM 18
ANSI FLUID SYMBOL

For more information, contact:

Donaldson Company, Inc., Aerospace & Defense Group
1400 West 94th Street, Minneapolis MN 55431-2370

Donaldson Defense +1-877-314-9637
defense.americas@donaldson.com

Europe +33 1 30866698
defense.emea@donaldson.com

To learn more about the
Donaldson Company, Inc., Aerospace & Defense Group
visit www.DonaldsonAerospace-Defense.com

Brochure No. F112275 ENG (11/15)

© 2015 Donaldson Company, Inc. All rights reserved.
Donaldson Company, Inc. reserves the right to change or discontinue any
model or specification at any time and without notice. Printed in the U.S.A.